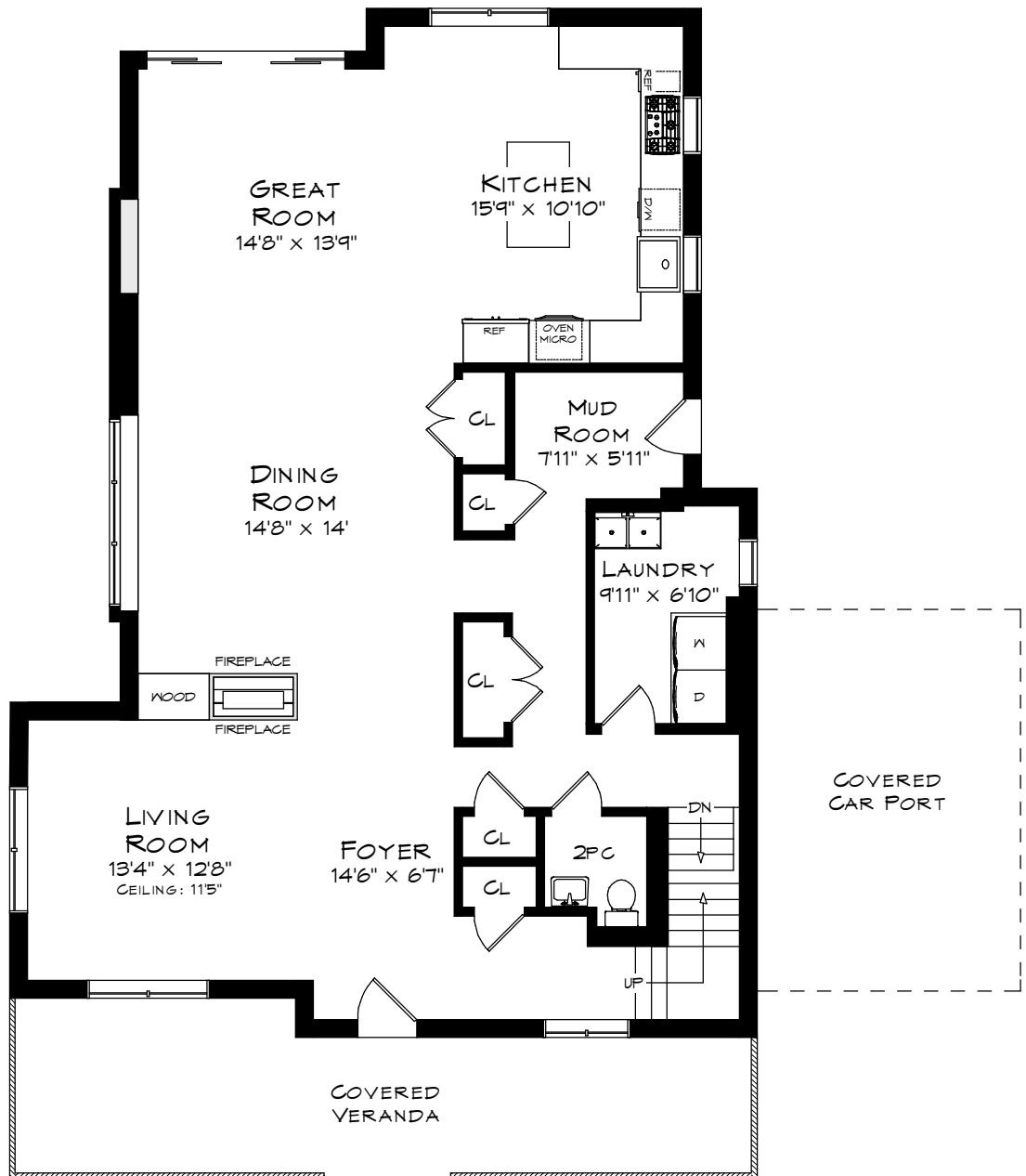


# 52 KERR STREET

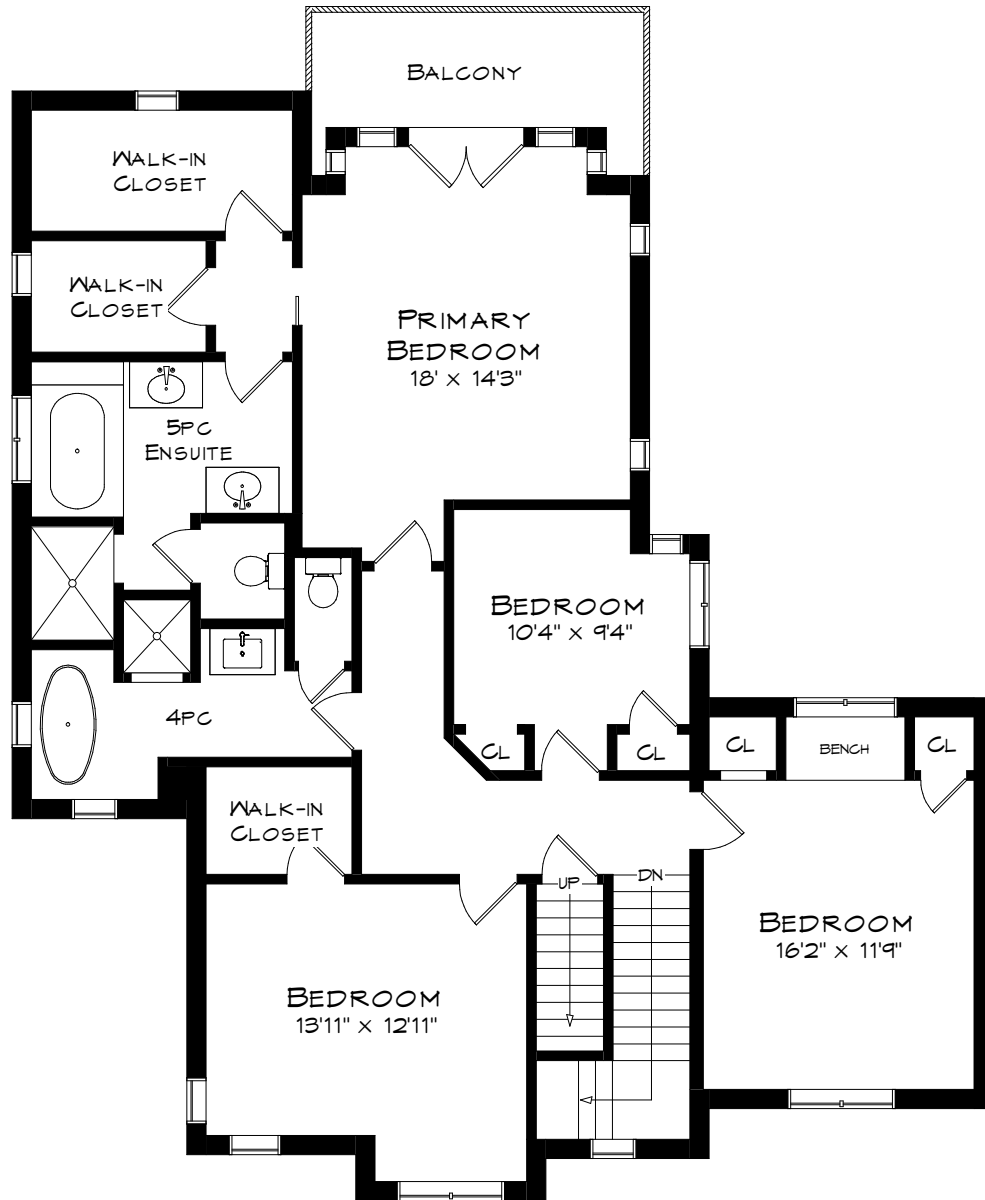
TOTAL SQUARE FOOTAGE  
4,538 SQ.FT.



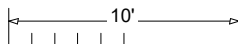
MAIN LEVEL  
1,416 SQUARE FEET

Measurements may not be 100% accurate  
and should be used as a guideline only.  
July - 2025

# 52 KERR STREET

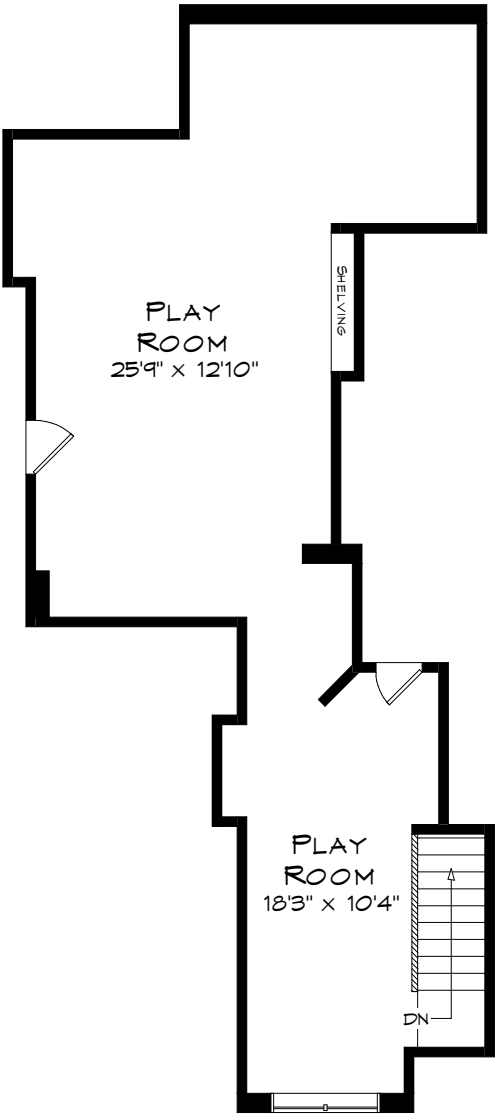


SECOND LEVEL  
1,449 SQUARE FEET

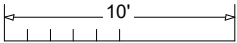


Measurements may not be 100% accurate  
and should be used as a guideline only.  
July - 2025

52 KERR STREET

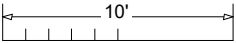
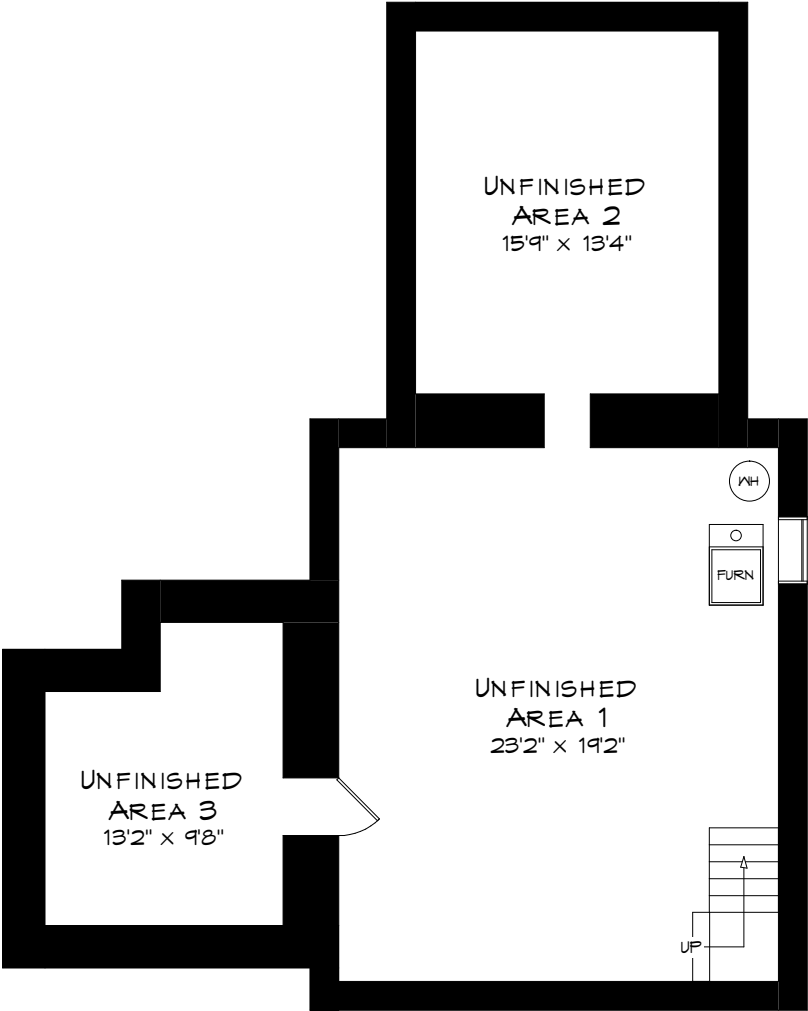


THIRD LEVEL  
621 SQUARE FEET



Measurements may not be 100% accurate  
and should be used as a guideline only.  
July - 2025

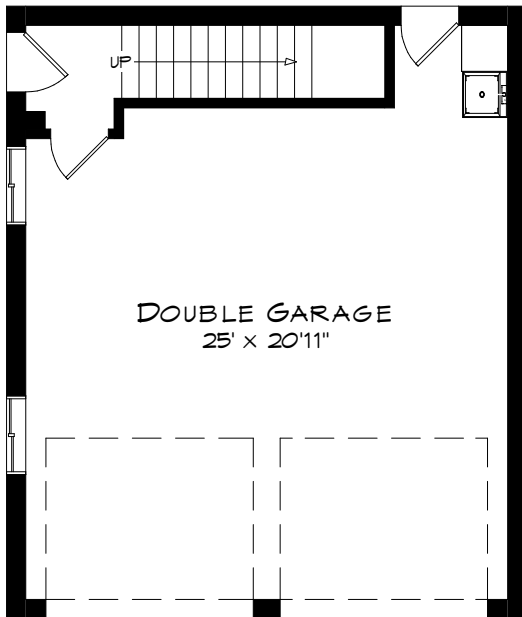
52 KERR STREET



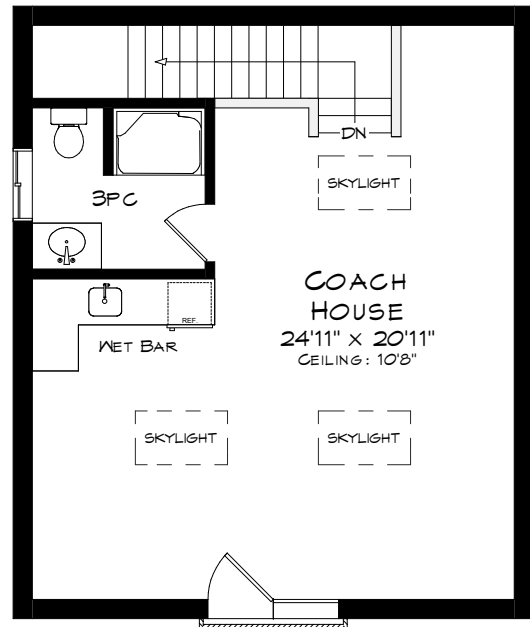
Measurements may not be 100% accurate  
and should be used as a guideline only.  
July - 2025

LOWER LEVEL  
1,052 SQUARE FEET

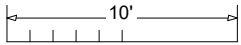
## 52 KERR STREET



GARAGE  
600 SQUARE FEET



UPPER LEVEL  
600 SQUARE FEET



Measurements may not be 100% accurate  
and should be used as a guideline only.  
July - 2025